

# Albina Library Design Update

Eliot Neighborhood Association Meeting

Monday, August 22, 2022

LEVER

NOLL & TAM  
ARCHITECTS

 Multnomah County **Library**  
**Capital Bond Projects**  
Great **libraries.** Great **communities.**

# Agenda

## **Albina Library**

1. Schedule
2. Process & Design Recap
3. Design Update (*incl. Collections Summary*)
4. DAR Hearing Update



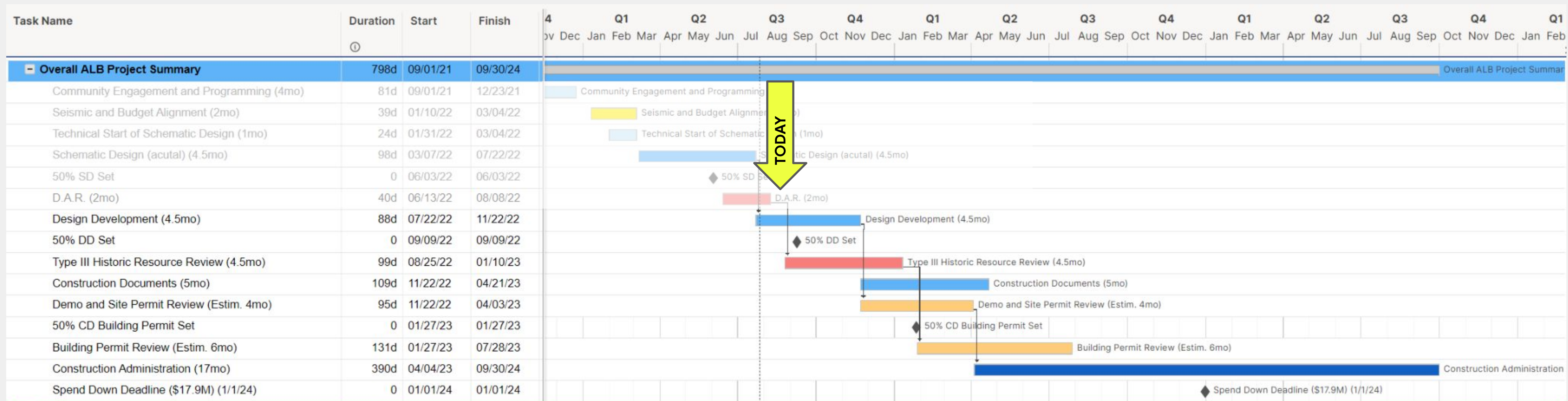
Albina

**Schedule Update**



**Albina**

# Albina Schedule



## Upcoming Albina Milestones:

- 8/25/22: Historic Resource Review App (Type III)
- 9/9/22: 50% DD Drawing + Specifications Set
- 11/23/22: 100% DD Demo + Sitework Permit Set

## Upcoming / Current Design Efforts:

- Exterior Facade / Massing Development
- Admin Space Design + Layout Development
- Seismic Design Development
- Landscape, Mech., Elec., Plumbing Design Development
- Comprehensive I-T Programming + Design
- Collection Planning Layout
- Program Room Concept Development



# Process & Design Recap



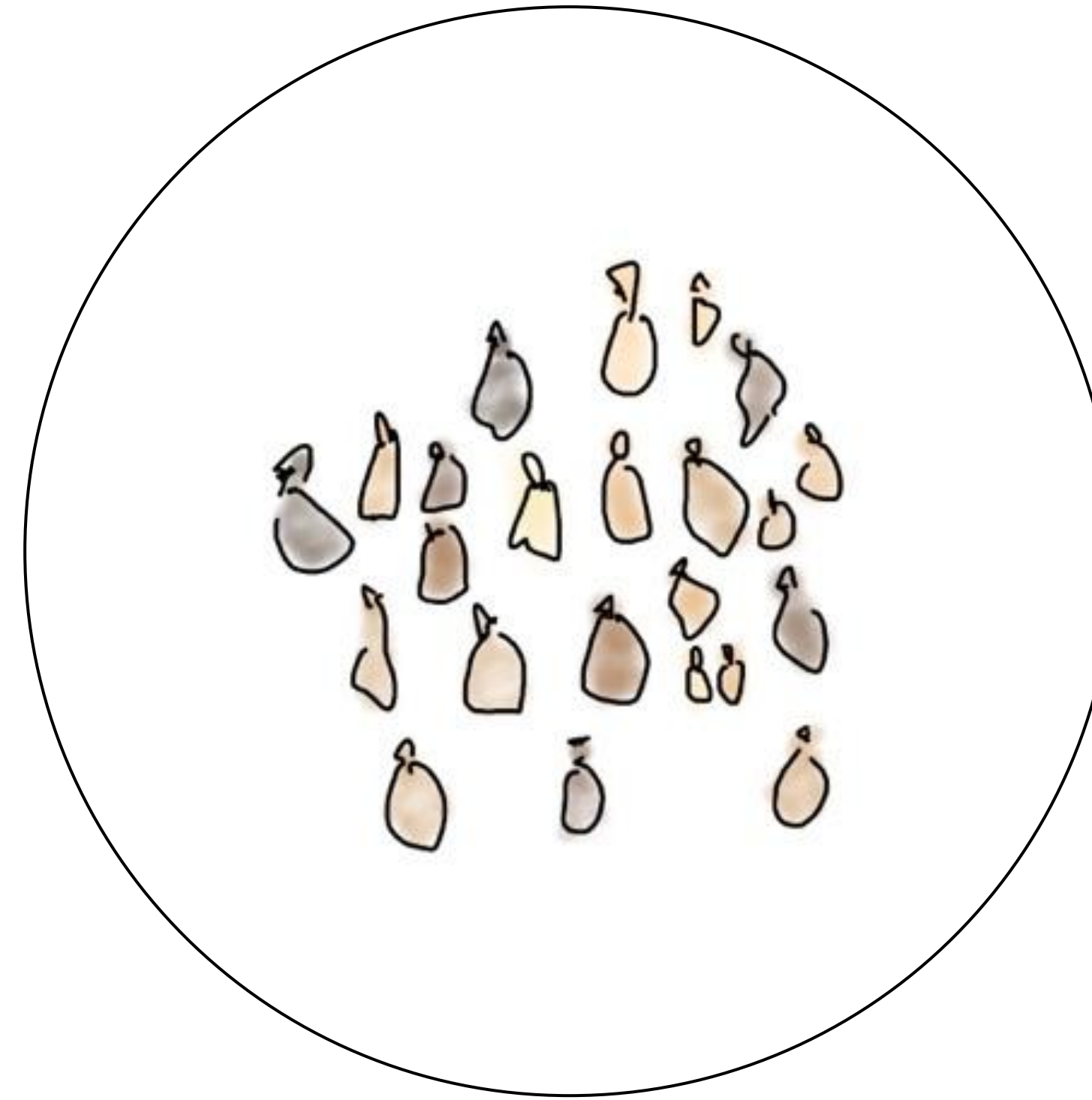
Albina

# Proposed Design

## Design Drivers

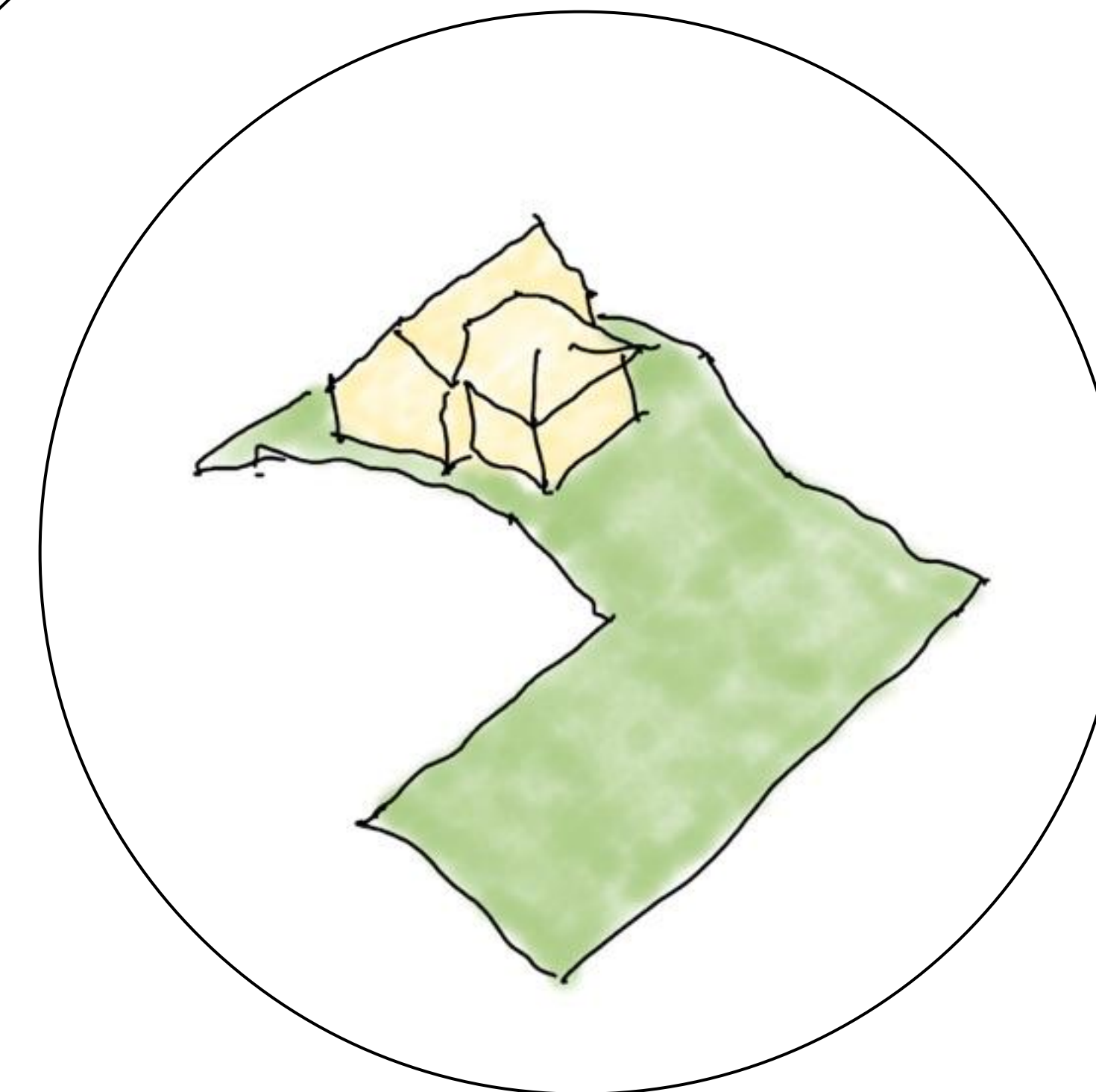
### Community

- Design Principles
- Patron experience
- Community history
- Desired amenities, services
- Outreach, Engagement, involvement



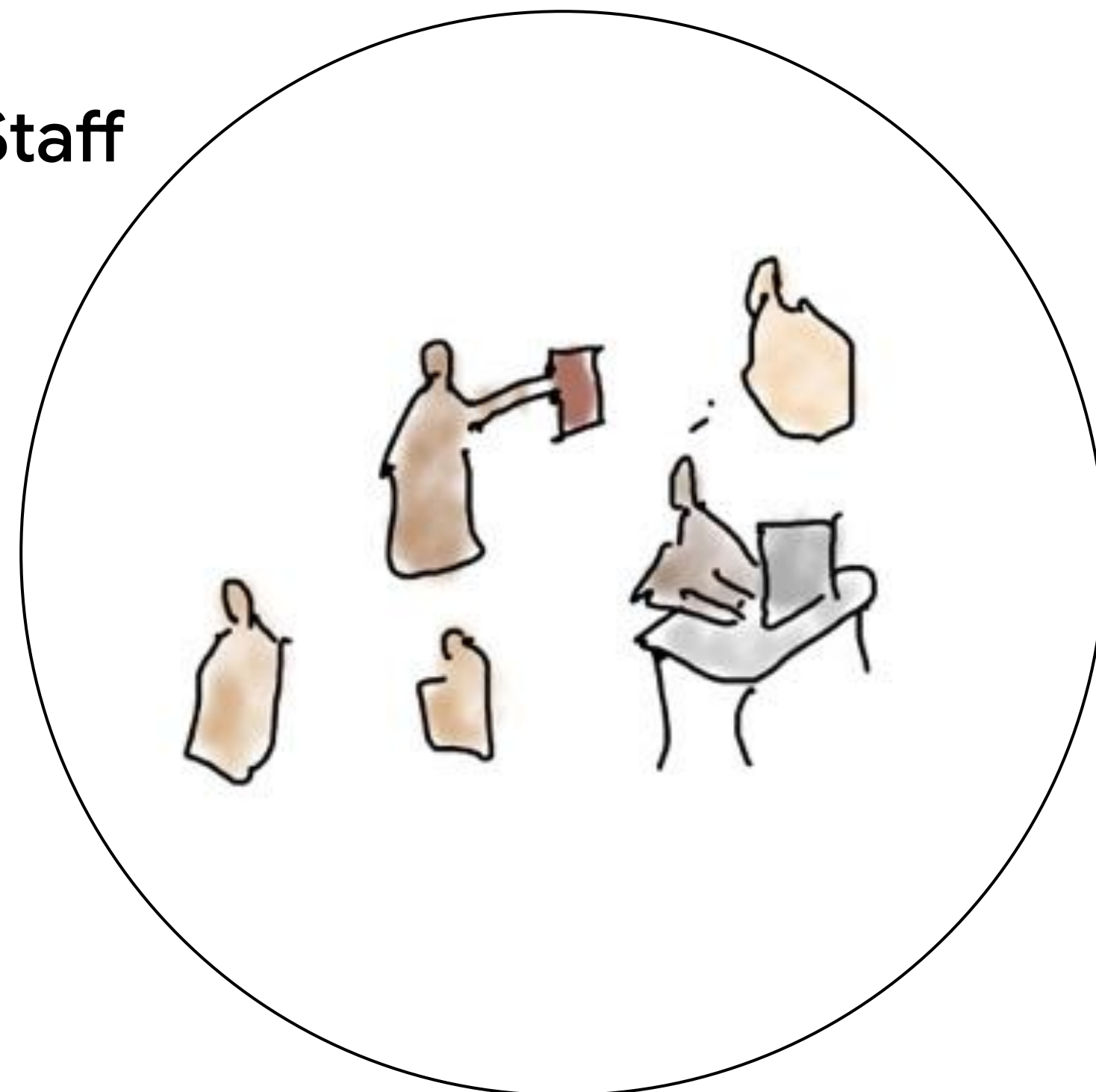
### Site / Context

- Historic Carnegie
- Grade change from Carnegie to Russell Street
- Two distinct street characters / contexts
- Neighborhood history



### Library Admin & Staff

- Program + Function
- Patron Experience
- Library & Program Management





# Design Process

## Community Engagement Process

**Forty One Meetings** (and counting) were held with community members to engage them in discussion around:

- Community priorities
- What libraries of the 21st century can offer
- Questions like: “What makes you feel welcome in a space?” “What kind of spaces do you need in a library?”

**Four types of meetings were held:**

- Large public virtual and in-person meetings
- Small affinity group meetings (Black Portlanders, Indigenous, Latinx, Disability, Immigrants and Refugees)
- One on One community stakeholder interviews
- Design team attendance at community events (Somali vaccination, Hacienda food pantry, Farmers market)





# Design Considerations

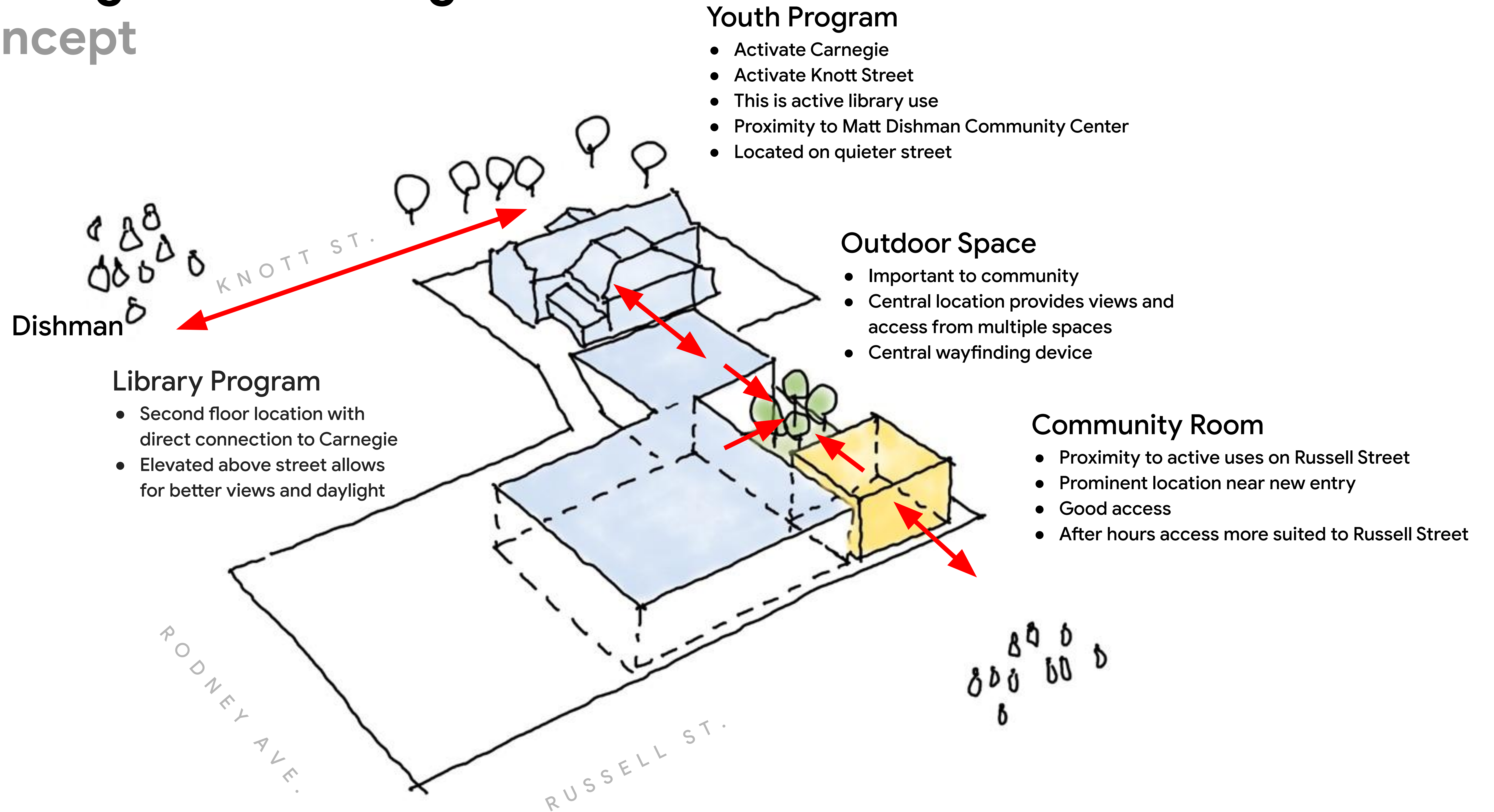
## Design Principles created from Community feedback

1. **Strengthen** the Albina Community
2. Recognition and **Celebration** of Culture
3. **Community Driven** process
4. **Accessible** Design
5. **Flexibility** in Short Term and Long Term
6. **Sustainability** and Connection to Nature



# Library Program in Carnegie

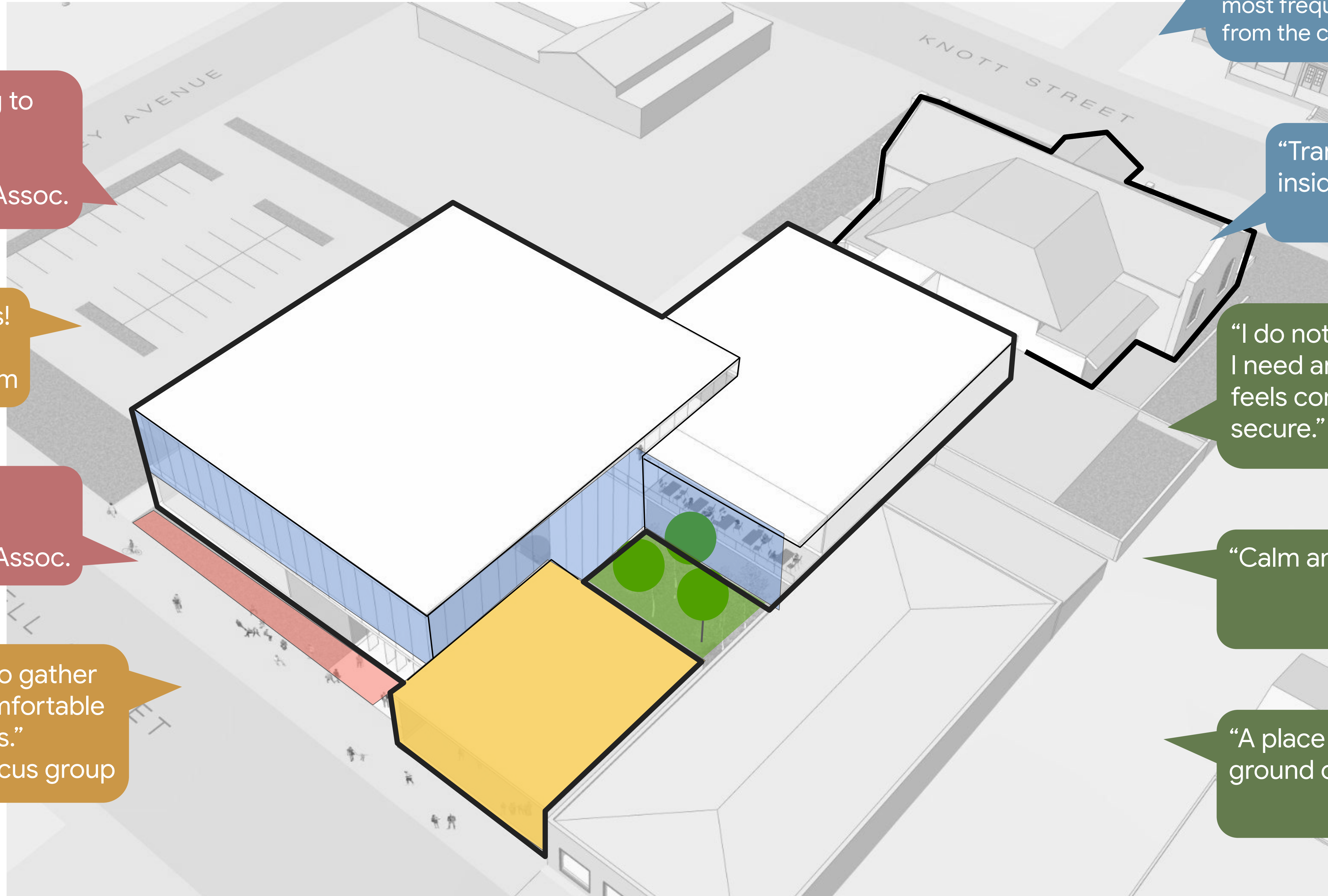
## Site Concept





# Design Process

## Community Driven Design



“Minimize off site parking to activate neighborhood streets.”  
-Albina Neighborhood Assoc.

“More community spaces! Both large and small.”  
-CE 3 Zoom

“Activate street front on Russell”  
-Albina Neighborhood Assoc.

“Space for large groups to gather for meetings that are comfortable and accessible for seniors.”  
-Black Portlanders focus group

“Open and light, with big windows”  
-Boards at Dishman  
Light, bright and open is the second most frequent comment we heard from the community.

“Transparency: between inside and outside.”  
-CE 1 Zoom

“I do not always feel safe outside. I need an outdoor space that feels completely safe and secure.”  
-Disability focus group

“Calm and secure outdoor areas.”  
-Latinx focus group

“A place to take our shoes off and ground ourselves to the earth.”  
- Indigenous focus group

**Design Update**

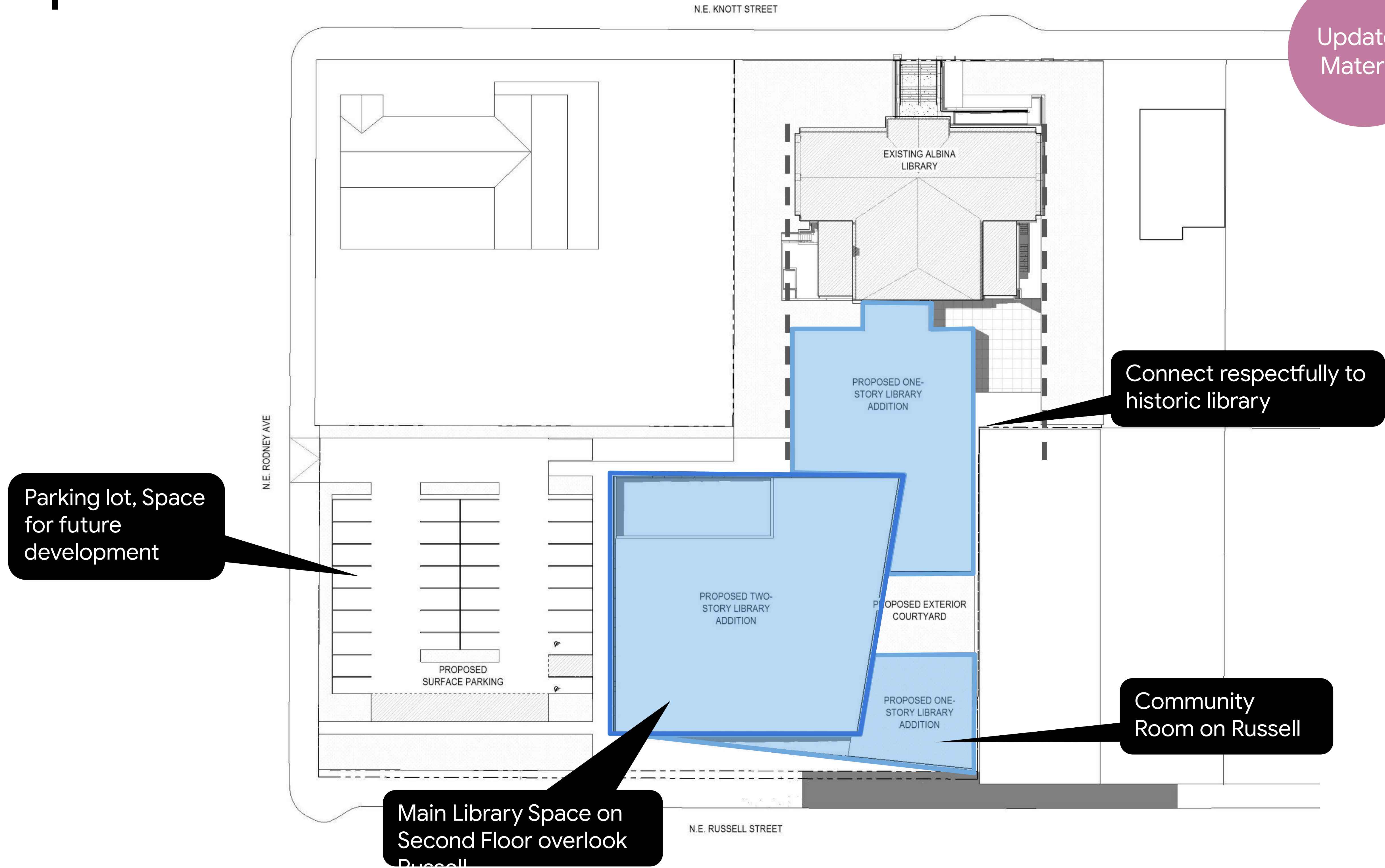


**Albina**



# Site Concept Site Plan

Updated  
Material



Parking lot, Space for future development

Connect respectfully to historic library

Main Library Space on Second Floor overlook Russell

Community Room on Russell



# Site Plan

Updated Material



Historic Library, Children Area

Courtyard w/ Covered Terrace

Space for Food Carts

Frontage Garden & Entry Plaza

Removal of both Russell St. curb cuts



# Floor Plan

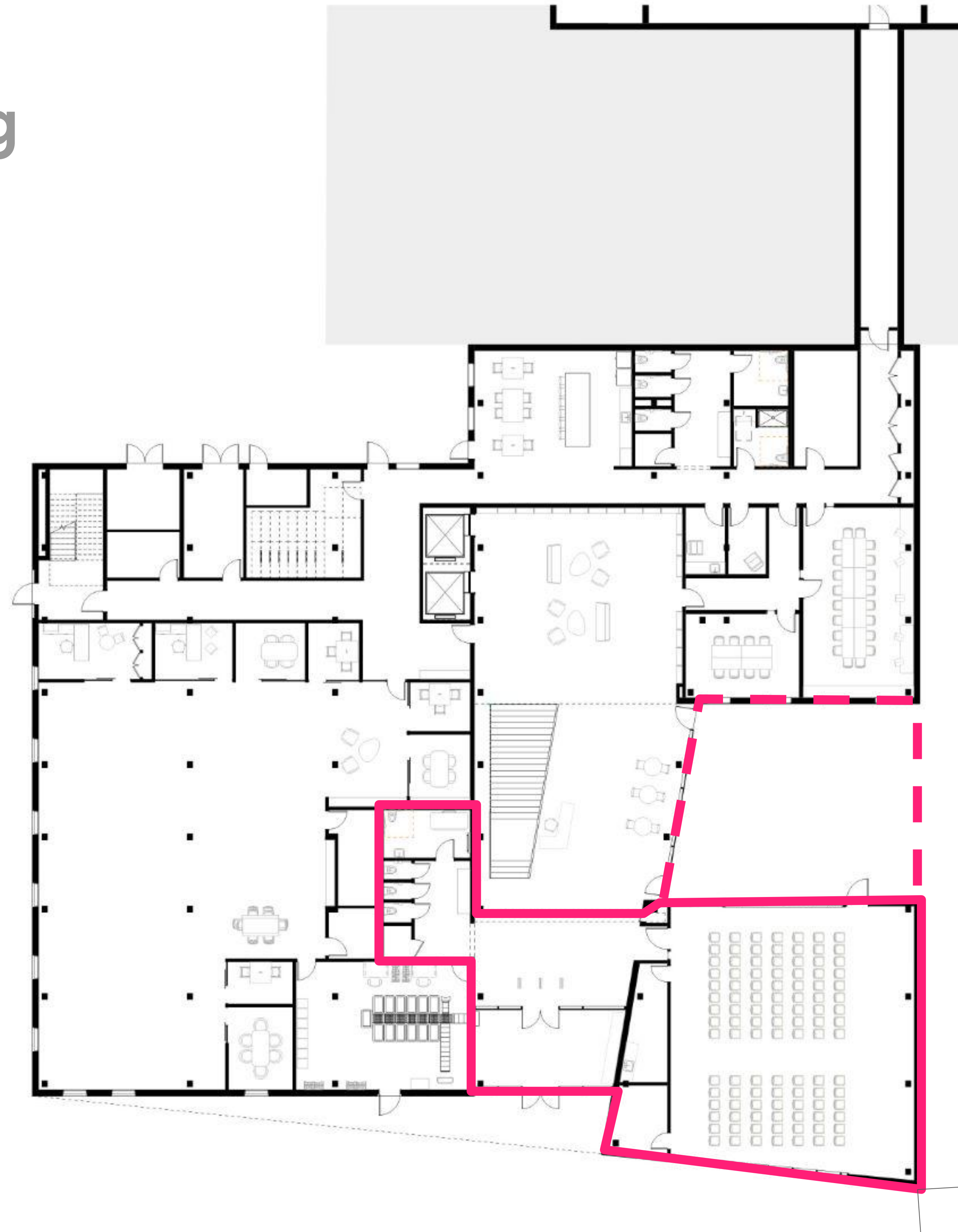
## Level 1

Updated  
Material



# Second Floor Plan

## After Hours Zoning



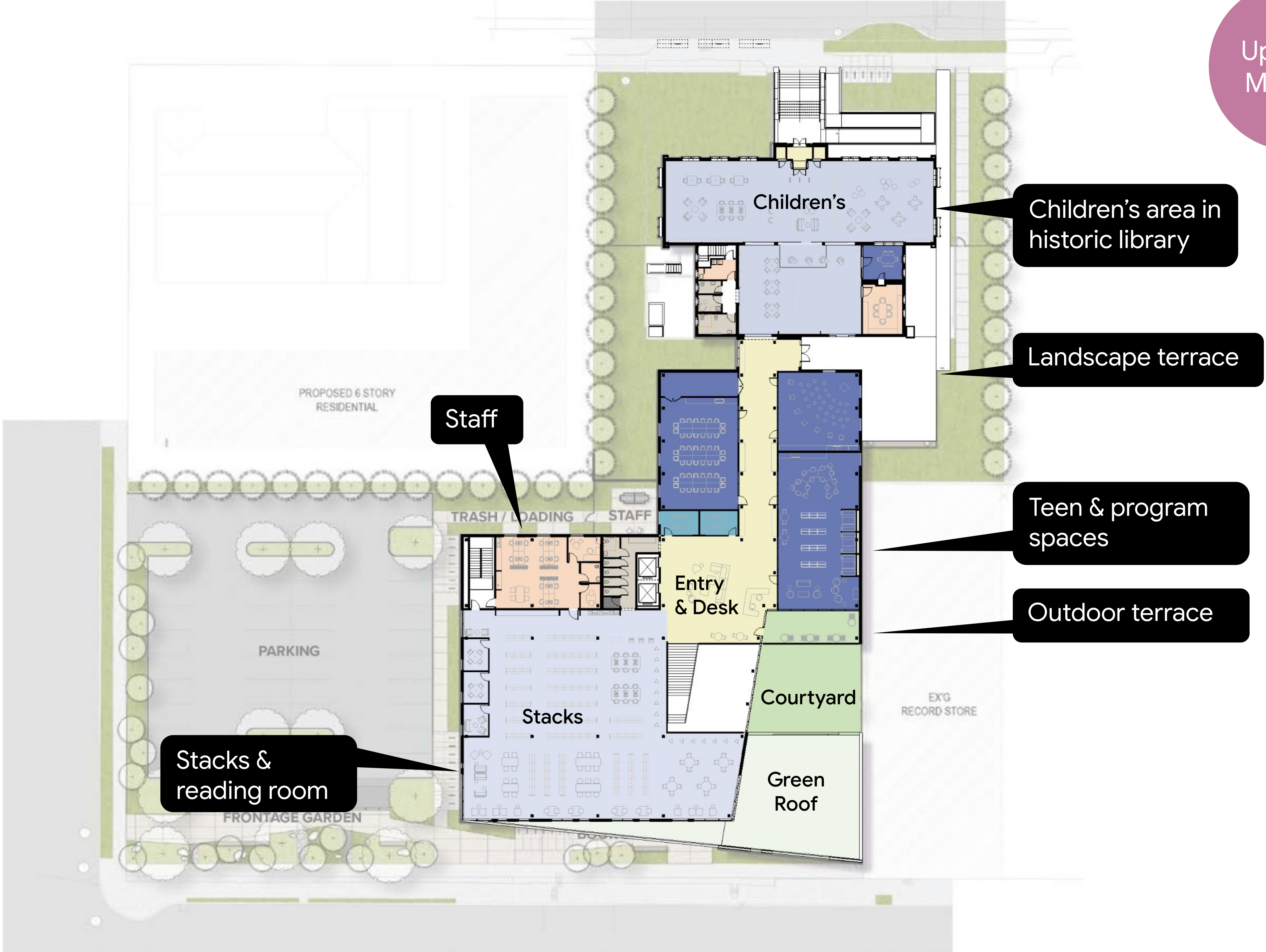
Access to: Community room, bathrooms  
Optional: Courtyard



# Floor Plan

## Level 2

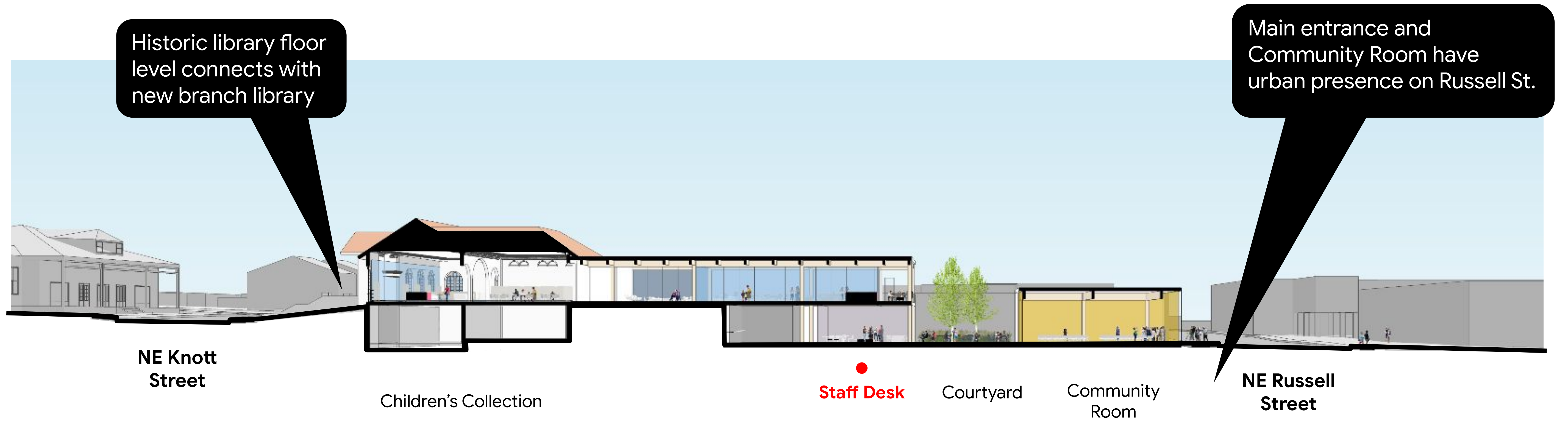
Updated Material





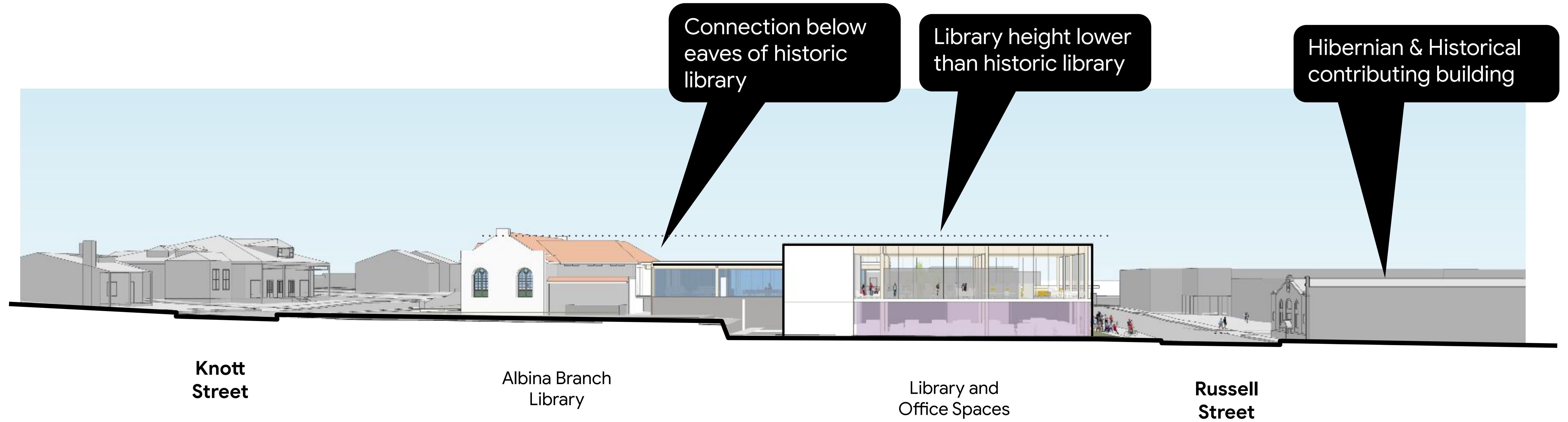
# Proposed Design

## N/S Building Section



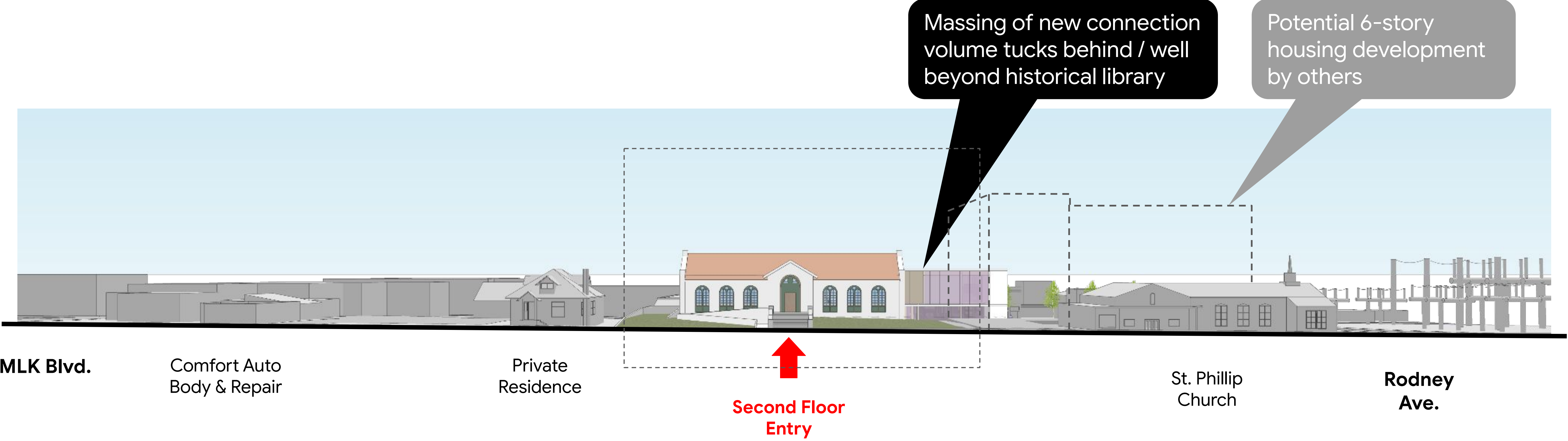
# Proposed Design

## West Rodney Elevation



# Proposed Design

## NE Knott Elevation





# Floor Plan

## Level 2

Updated  
Material





# Existing Conditions

## Interior Photos





# Historic Restoration

## Interior Archways



Archways infilled during 1954 renovation



# Historic Restoration

## Interior Archways





# Southeast Aerial





# Southwest Aerial





# View from Knott Street



FUTURE 6 STORY  
HOUSING

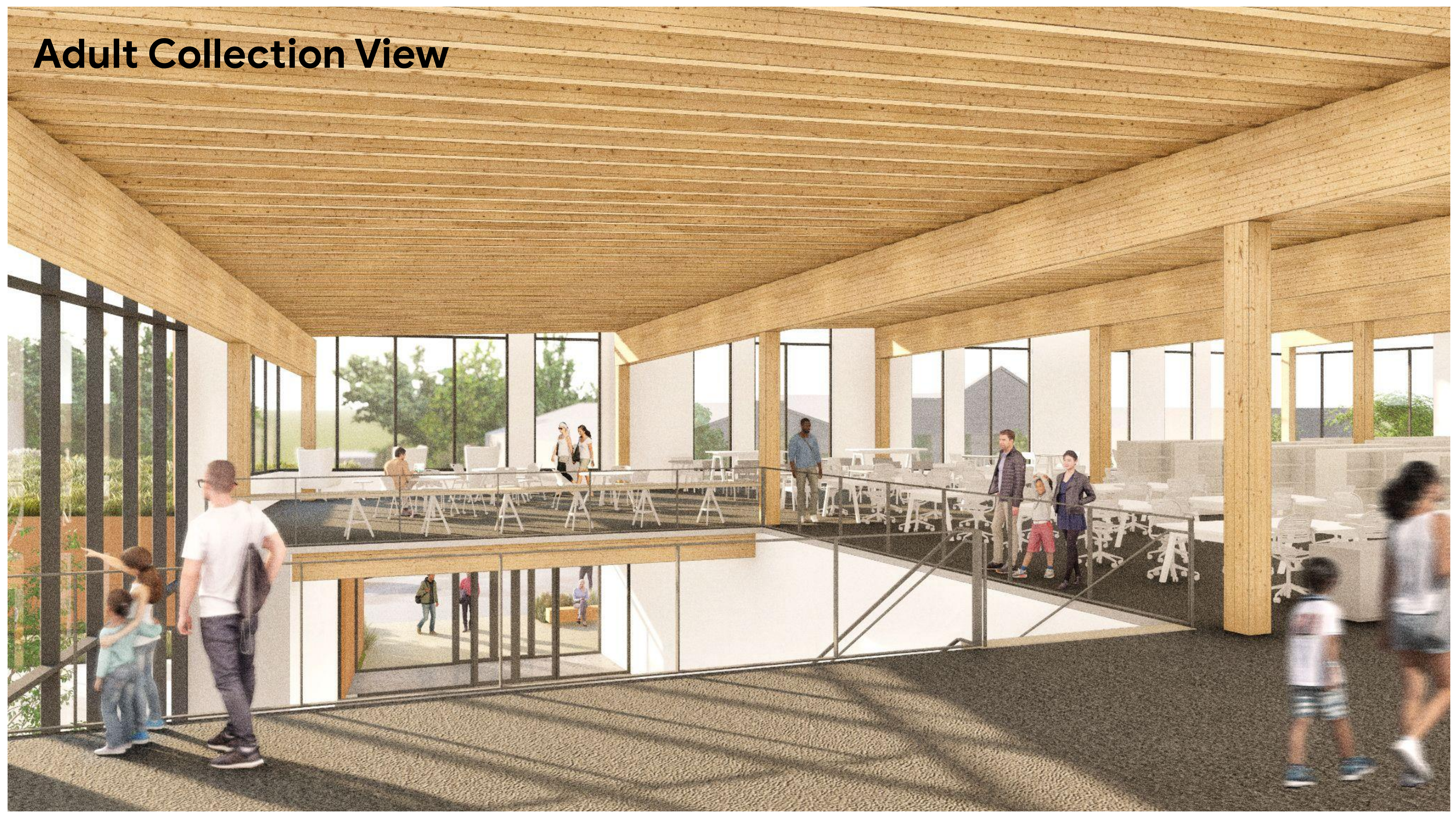




**Entry View**



# Adult Collection View





# Facade Options - All 3 presented at DAR



## Option A

- All Metal Panel Second Floor
- Metal Panel Community Room
- Brick at Entry / Admin



## Option B

- All Metal Panel Second Floor
- All Brick Base
- Thinner Entry Canopy



## Option C

- Vertical Ribbed Metal Panels
- Metal Panel Community Room
- Brick at Entry / Admin
- Thinner Entry Canopy



# Option A

## View 1



Thicker Entry Canopy

Brick

Corrugated Metal Panel



# Option B

## View 1



Thinner Entry Canopy

Brick

Brick



# Option C

## View 1



Thinner Entry Canopy

Brick

Vertical Ribbed Metal Panel



# Discussion



North  
Portland



**Thank you.**